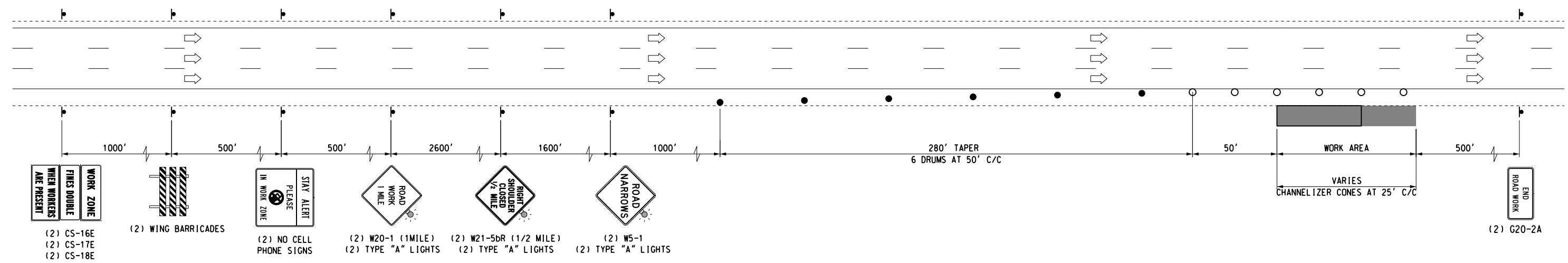


| REVISIONS |             |      |
|-----------|-------------|------|
| NO.       | DESCRIPTION | DATE |
|           |             |      |



09/18/17 G:\Projects\I-2598 I-35 Signing Project - EC-885B.Task\I\CAD\106-32625(04)-TYPICAL SHOULDER CLOSURE DETAIL.dgn

|        |     |          |
|--------|-----|----------|
| Design | RWR | 09/18/17 |
| Drawn  | CCC | 09/18/17 |



### TYPICAL INTERSTATE SHOULDER CLOSURE

State Job No. 32625(04) Sheet No. T106

CLEVELAND/OKLAHOMA COUNTY